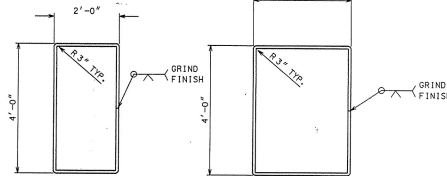
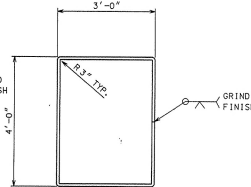


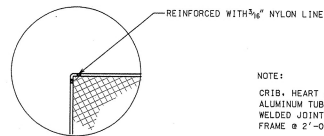
CRIB FRAME
SCALE: 1" = 2'



HEART FRAME
SCALE: 1" = 2'



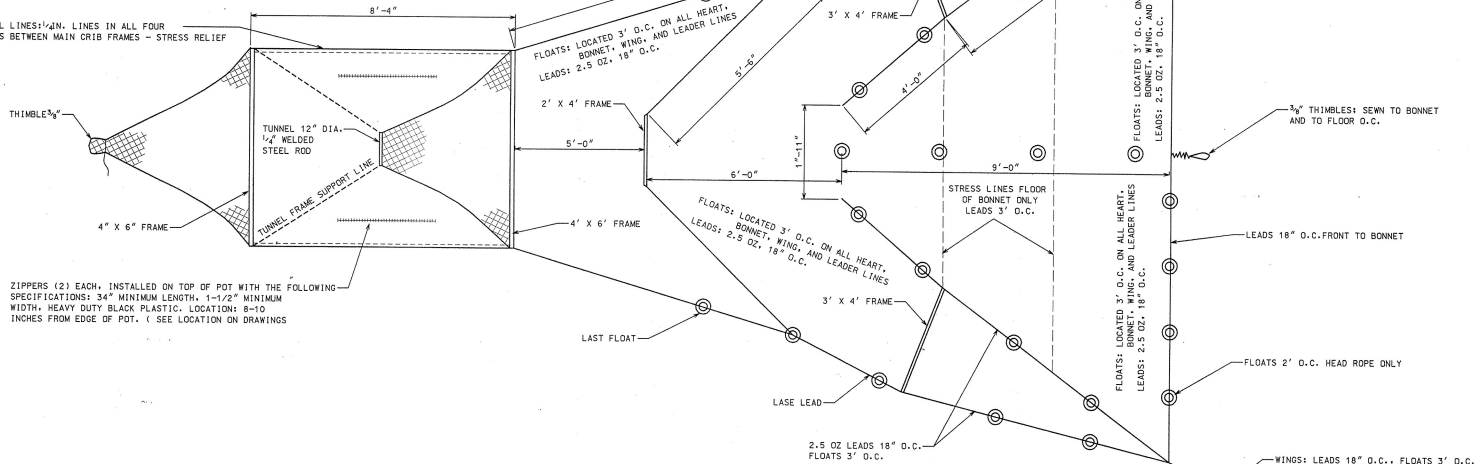
WING FRAME
SCALE: 1" = 2'



ALL CORNERS

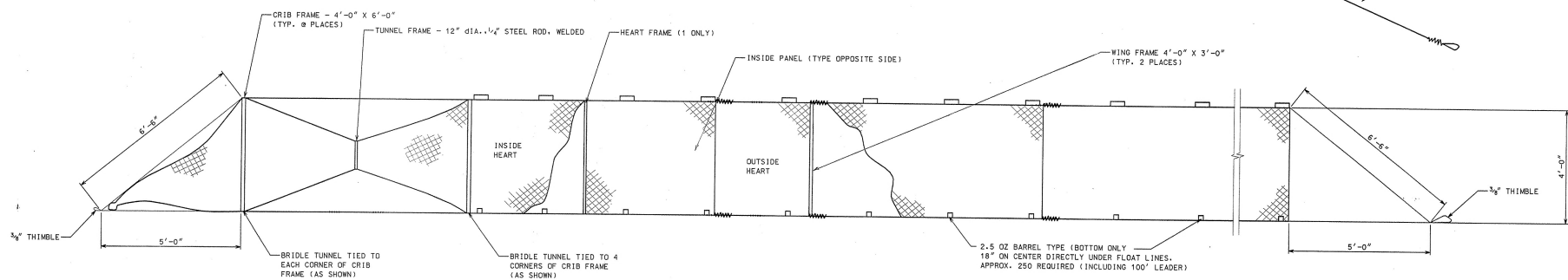
NOTE:
CRIB, HEART & WING FRAMES TO BE 6061-T6 DRAWN ALUMINUM TUBING, 1" O.D. x .065 WALL THICKNESS. WELDED JOINTS 3/8" DIA., HOLES DRILLED THRU FRAME @ 2'-0" C. TO C.

SPECIAL LINES: 1/4" LINES IN ALL FOUR CORNERS BETWEEN MAIN CRIB FRAMES - STRESS RELIEF



ZIPPERS (2) EACH, INSTALLED ON TOP OF POT WITH THE FOLLOWING SPECIFICATIONS: 3/4" MINIMUM LENGTH, 1-1/2" MINIMUM WIDTH, HEAVY DUTY BLACK PLASTIC. LOCATION: 8-10 INCHES FROM EDGE OF POT. (SEE LOCATION ON DRAWINGS)

NOTES:
ALL NETS TO BE MADE OF BONDED DUPONT NYLON.
NETTING: TO BE 1" STRETCHED 1/2" SQUARE MESH (FISHING MEASURE) NYLON, KNOTLESS, KNITTED, 100% BONDED DUPONT NYLON, REF. (IND. 185, 54 WET STRENGTH) TO BE STRUNG ON THE DIAMOND, 20 MESHES TO THE FOOT TO BE SEWN WITH #9 NYLON TWIN NOT LESS THAN A DOUBLE KNOT PER EVERY OTHER MESH ON ALL FRAMES AND LINES.
100' LEADER LINES: 1/2" SOLID BRAIDED NYLON
TAP NET LINES: 3/8" BONDED NYLON
FLOATS: SPONGEX TYPE SB-3 2 1/2" X 1 1/2" X 1/2" LOCATED 3' O.C. ON ALL HEART, BONNET, WING, AND LEADER LINES
LEADS: 2.5 OZ 18" O.C.
LEADER:
100' LONG WITH 2.5" X 1 1/2" X 1/2" SPONGEX SB-3 FLOATS, 3' O.C., LEADS 18" O.C. (2:50Z)
NET TREATMENT:
ALL NETTING INCLUDING 100' LEAD TO BE COMPLETELY DYED A DARK COLOR. CARE SHOULD BE TAKEN WHEN DYING TO AVOID STIFFNESS. HIGH QUALITY SUBSTANCE SHOULD BE USED TO AVOID NYLON DETERIORATION REF. NYLON NET SET



REVISIONS		PENNSYLVANIA FISH & BOAT COMMISSION BUREAU OF ENGINEERING & DEVELOPMENT				PROJECT NO.
A	SUBMITTED :					TRAP NET FISHERIES MANAGEMENT BUREAU OF ENGINEERING & DEVELOPMENT PENNSYLVANIA FISH & BOAT COMMISSION 450 ROBINSON LANE EDWARD RENDELL GOVERNOR DEPARTMENT OF GENERAL SERVICES SECRETARY HARRISBURG PENNSYLVANIA
P	ENGINEER: ENGINEERING DESIGN SECTION					
P	APPROVED :					
R	APPROVED :					
D	APPROVED :					
V	DESIGNED BY:	ARCH.	CIVIL STRUCT.	MECH.	ELECT.	
A	DATE:					
L	DRAWN BY:					
S	CHECKED BY:					
	DATE:					